

Measurement Systems

Overview

Automatiq provides components for Versi-Traq Test Fixtures. This datasheet provides information and pricing for pogo pins and sockets, push down pins, foam spacers, interlock switches, and safety skirts.

Ordering Information

*Pogo Pins & Sockets

Sockets are pressed into the Probe Plate, usually flush with the top surface.

Pogo pins are inserted into the sockets from the top and can be replaced by pulling out the old pin and pushing in the new pin.

The pogo pin size depends on the center to center distance between the probe points.

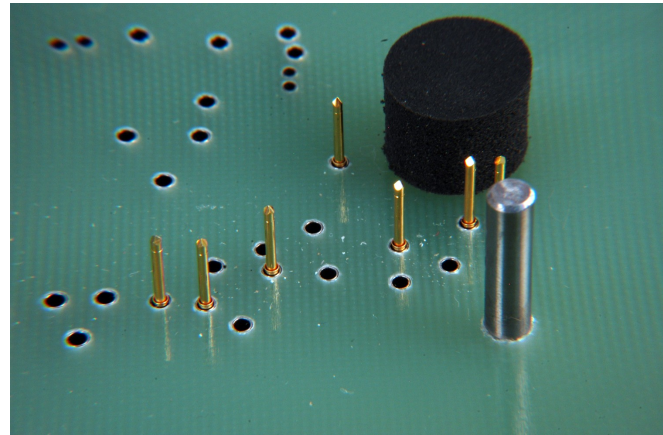
- Pins that can mount on 0.100" centers are the least expensive and most rugged pins. They should be used whenever possible.
- Pins that can mount on 0.075" centers are somewhat more expensive but are nearly as rugged as the 0.100" pins.
- Pins that can mount on 0.050" centers are much more expensive and much less rugged than other pin sizes. They are not recommended for most Test Fixtures.

The head of the pogo pins will depend on the nature of the probe points being contacted on the board.

- Crown heads can be used for through-hole pins or leads.
- Small Chisel heads can be used for test pads.
- Large or Small Chisel heads can be used for open holes (large enough to avoid going through the hole).
- Round heads can be used for gold pads or sockets only.
- Spear heads can be used for component pads to avoid slipping on sloped surfaces.
- Razor Sharp heads can be used for no-clean solder boards because the heads will mark the test points on other boards.

*Guide Pins

We recommend using hardened drill blanks for guide pins. They can be cut to 1.000" long using a rotary tool with a cutoff wheel. Purchase the blanks from any mill supply house.



Item	Order Number	QA Tech #	Price 1-49	Price 50+
0.125" Solder Cup Socket	CON00051.01	125-SDN250S	\$2.37	\$1.58
0.125" Crown Pin	CON00052.01	125-PRG2556S	\$5.64	\$3.76
0.125" Large Chisel Pin	CON00052.04	125-PRG2503S	\$5.64	\$3.76
0.100" Solder Cup Socket	CON00013.01	100-SDN250S	\$0.57	\$0.38
0.100" Crown Pin	CON00014.01	100-PRG2558S	\$1.80	\$1.20
0.100" Round Pin	CON00014.02	100-PRG2540S	\$1.80	\$1.20
0.100" Small Chisel Pin	CON00014.03	100-PRG2543S	\$1.80	\$1.20
0.100" Large Chisel Pin	CON00014.04	100-PRG2503S	\$1.80	\$1.20
0.100" Spear Pin	CON00014.06	100-PRG2541S	\$1.80	\$1.20
0.100" Razor Sharp Pin	CON00014.08	100-PRG256RX-S	\$2.01	\$1.34
0.075" Solder Cup Socket	CON00045.01	075-SDN250S	\$1.08	\$0.72
0.075" Crown Pin	CON00046.01	075-PRG2558S	\$3.30	\$2.20
0.075" Round Pin	CON00046.02	075-PRG2540S	\$3.30	\$2.20
0.075" Small Chisel Pin	CON00046.03	075-PRG2543S	\$3.30	\$2.20
0.075" Large Chisel Pin	CON00046.04	075-PRG2503S	\$3.30	\$2.20
0.075" Spear Pin	CON00046.06	075-PRG2541S	\$3.30	\$2.20
0.050" Solder Cup Socket	CON00049.01	050-STB255P	\$3.03	\$2.02
0.050" Crown Pin	CON00050.01	050-PTP2558S	\$5.94	\$3.96
0.050" Small Chisel Pin	CON00050.03	050-PTP2543S	\$5.94	\$3.96
0.050" Large Chisel Pin	CON00050.04	050-PTP2503S	\$5.94	\$3.96

Measurement Systems

Ordering Information

*Foam Spacers

Foam Spacers are used, when necessary, to stabilize the circuit board as it is inserted and pushed down onto the pogo pins. They are self adhesive.

Item	Order Number	Price 1-9	Price 10+
Foam Spacer; 0.500"	FMP00024.500	\$1.50	\$1.00

*Push Down Pins

Push Down Pins press into 0.125" diameter holes on the Top Cover and push the circuit board down on the pogo pins. At least one Push Down Pin is required for every ten pogo pins, with a minimum of four.

Use 1.050" long pins for normal applications.

Item	Order Number	Price 1-9	Price 10+
Push Down Pin; 1.050" long	FMP00022.1050	\$6.00	\$4.00
Push Down Pin; 0.800" long	FMP00022.0800	\$6.00	\$4.00

*Interlock Switch

An Interlock Switch is available. It is mounted on the left Latch Tower and closes only after the Top Cover is down and latched.

Note: The Interlock Switch is not suitable for high current or high voltage switching. Use a low voltage relay to buffer the Interlock Switch.

Item	Order Number	Price Each
Interlock Switch Latch Tower; Left	ASY00028.02	\$50.00
Interlock Switch Latch Tower; Right	ASY00028.01	\$50.00

*Safety Skirts

Safety Skirts are fabricated from 0.250" x 1.000" clear polycarbonate and screwed to the bottom of the top cover. Mounting holes must be drilled in the Probe Plate and Top Cover. They prevent the operator from contacting high voltage.

Item	Order Number	Price Each
Safety Skirts; Standard	ASY00029.02	\$85.00
Safety Skirts; Wide	ASY00029.03	\$100.00
Safety Skirts; Extra Wide	ASY00029.04	\$110.00
Safety Skirts; Deep	ASY00029.12	\$100.00
Safety Skirts; Deep and Wide	ASY00029.13	\$115.00
Safety Skirts; Deep and Extra Wide	ASY00029.14	\$125.00

More Information

For more information about designing and fabricating Versi-Traq Test Fixtures, see the [Versi-Traq Design Guide \(DOC-00038\)](#).